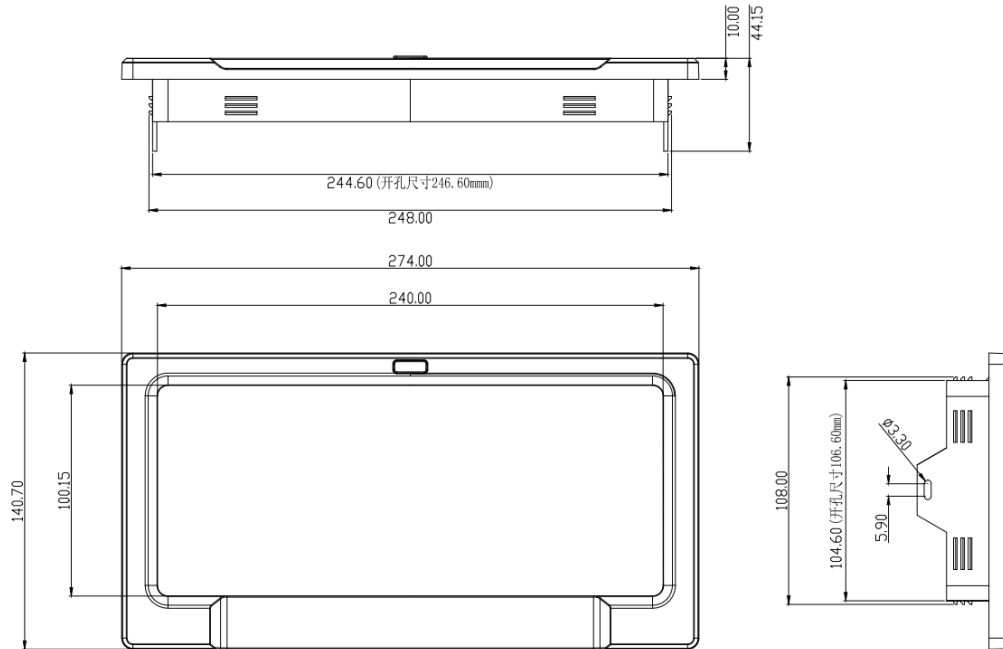


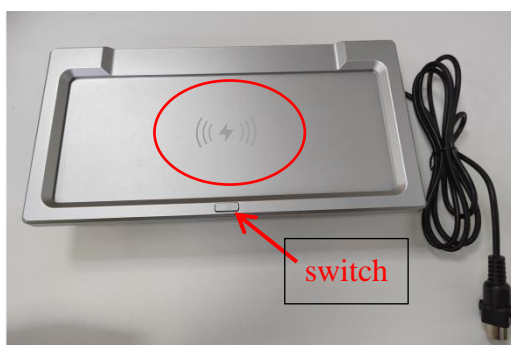


WIRELESS CHARGING PANEL  
TROUBLESHOOTING GUIDE

## Dimensional Drawing



## Product Features –



**1. Wireless charging area:** red circled area is for Wireless charging.

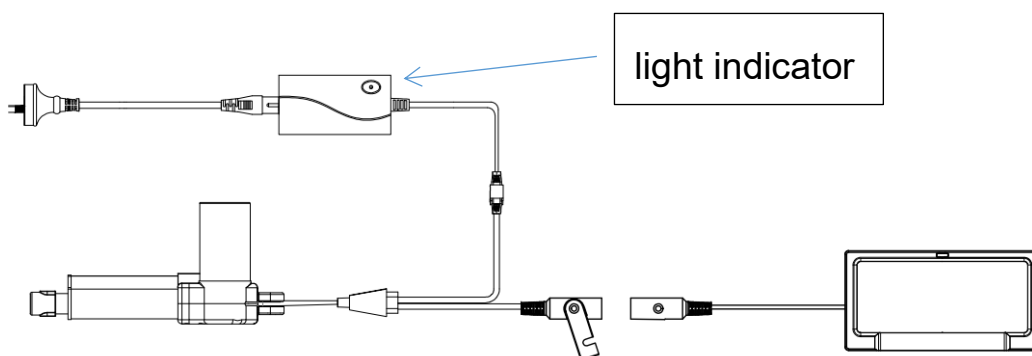
**2.Switch:** actuator control button.

User can use this wireless charging panel, to upgrade conventional table to electronic armrest. This can facilitate storage of cups and increase the user's sense of experience.

## Main Requirements for Performance Parameters

| Wireless charging area  |               |
|-------------------------|---------------|
| input                   | DC 29V 2A     |
| wireless charging power | 15W           |
| Power cord              |               |
| color                   | black         |
| cord core               | 4*22AWG       |
| length                  | 1500mm        |
| plug style              | 5 pin, 4 core |

## Installation instructions



Step1, connect all products according to connection diagram

Step2, according to below diagram, press and insert wireless charging panel to pre-cut slot.



## **Note of use and common questions**

### **A. Make sure your phone is compatible with wireless charging pad**

Apple: iPhone 8 to iPhone 14 series

Samsung: S7 to S22 series, Fold 4, Flip 4

Google: Pixel 4 to above

Sony: Xperia XZ2 to above

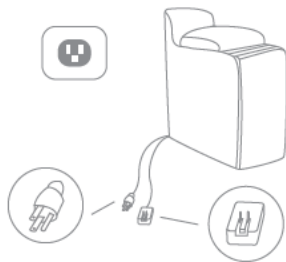
Huawei: Mate 20 to above series

LG: G3 to above series

### **B. Place your phone in the center of the charging surface.**



## How to use the wireless charger



Connect micro power adapter to electrical outlet and check if the USB port can work smoothly.



Place the phone with wireless charging enabled on the center of the charging pad.

\* Not all phone cases allow for wireless charging.

## C. Can't charge

Check according to below steps:

1. Check if power supply light indicator is on

1.1 Light on is normal.

1.2 Light off, please check power supply chord connection status, if connected normal without indicator light on, please try to replace a new power supply.

2. Check if the phone support wireless charging function.

3. Check if the phone is around the wireless charging area (central area of panel).

4. Check if phone case is too thick, suggest to take out phone case.

5. Check if some metal products between phone and wireless charging panel, such as coins.

