

Read instructions carefully prior to assembly.

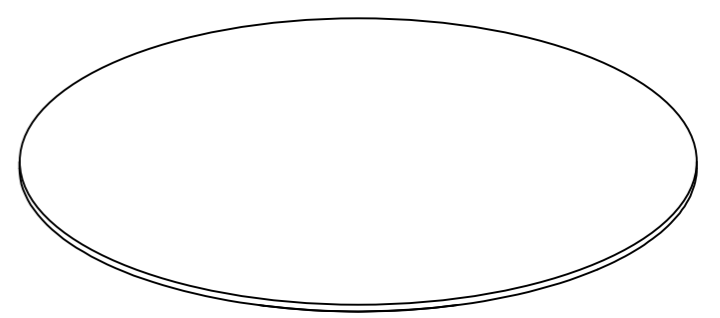
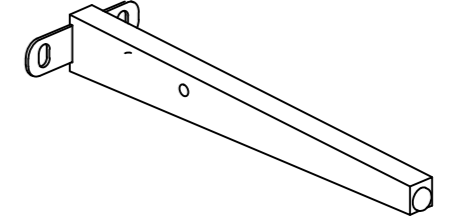

Thank you for purchasing this quality product. Check carefully for small parts which may come loose during shipment. Remove all components from pack and place top down on soft surface such as carpet or cloth to prevent scratching the finish. Identify and count all parts as specified below.

It is recommended to use two or more persons during the assembly process.

HARDWARE LIST:

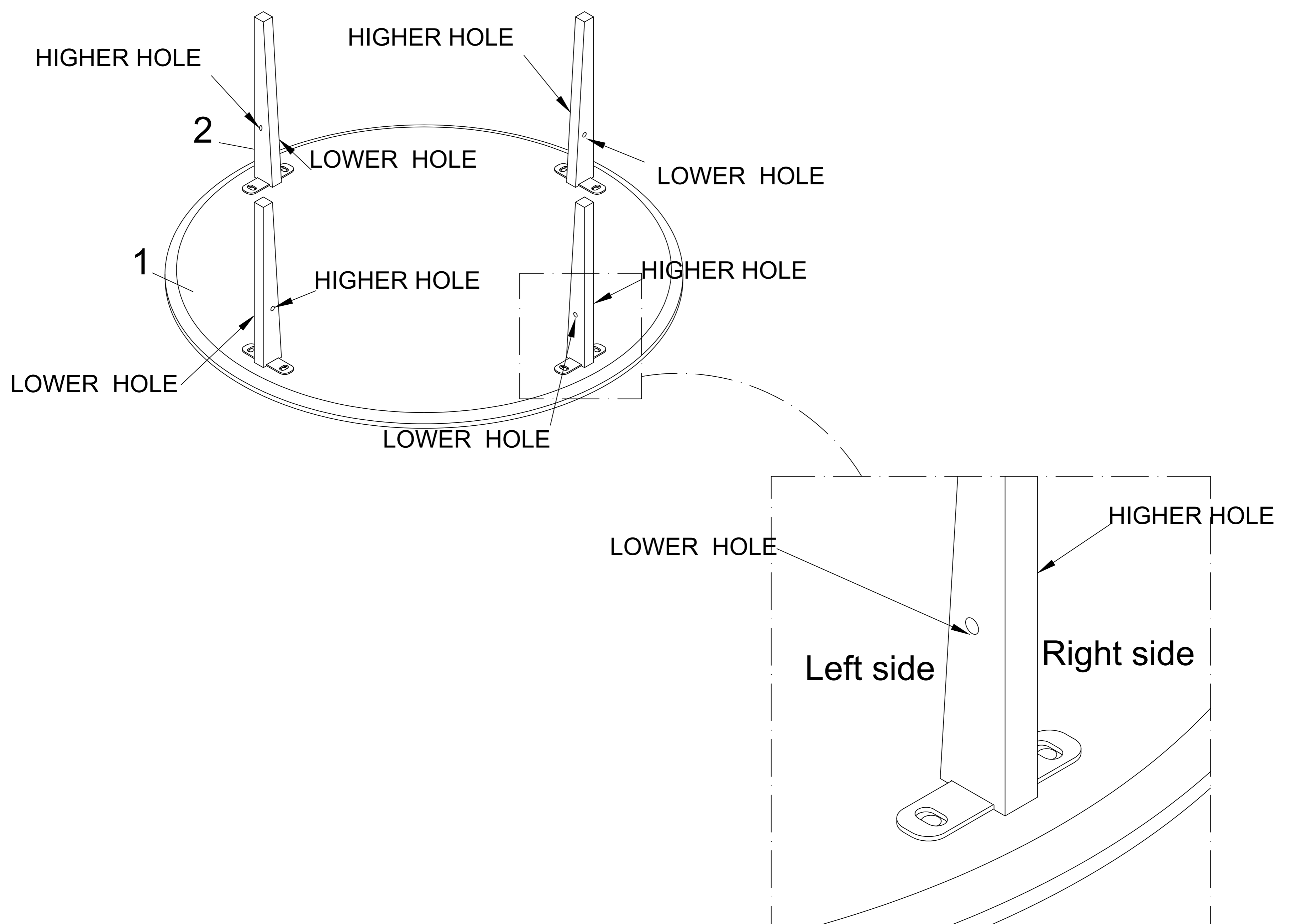
No.	Description		
A		Ø5/16*19 Flat Washer	8 Pcs
B		Ø5/16*13 Spring Washer	8 Pcs
C		Ø5/16*20 Allen Bolt	8 Pcs
D		4mm Allen Key	1 Pc
E		Ø4*38 Screw	8 Pcs

PARTS LIST:

No.	Description	Sketch	Qty
1	Top		1 Pc
2	Leg		4 Pcs
3	Stretcher		4 Pcs

Step 1: Align the Leg (2) to make sure all the legs are the same direction as picture shown

NOTE: SEE THE LOWER HOLE IS LEFT SIDE, THE HIGHER HOLE IS RIGHT SIDE.



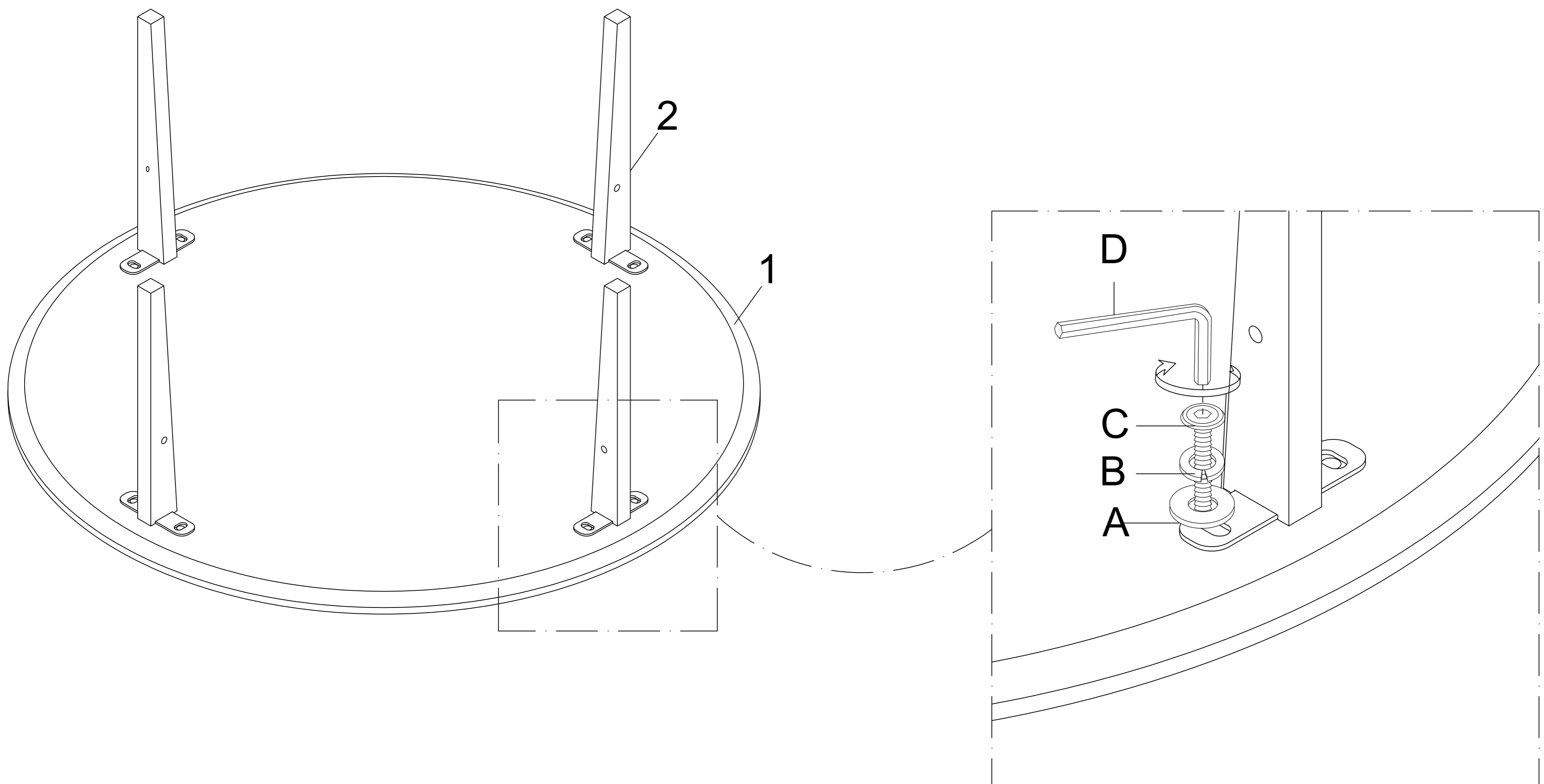
Read instructions carefully prior to assembly.

Thank you for purchasing this quality product. Check carefully for small parts which may come loose during shipment. Remove all components from pack and place top down on soft surface such as carpet or cloth to prevent scratching the finish. Identify and count all parts as specified below.

It is recommended to use two or more persons during the assembly process.

Step 2: Attach the Leg (2) to the Top (1) by using Flat washer (A), Spring washer (B), Allen Bolt (C), tighten bolts by turning Allen key (D) as clockwise.

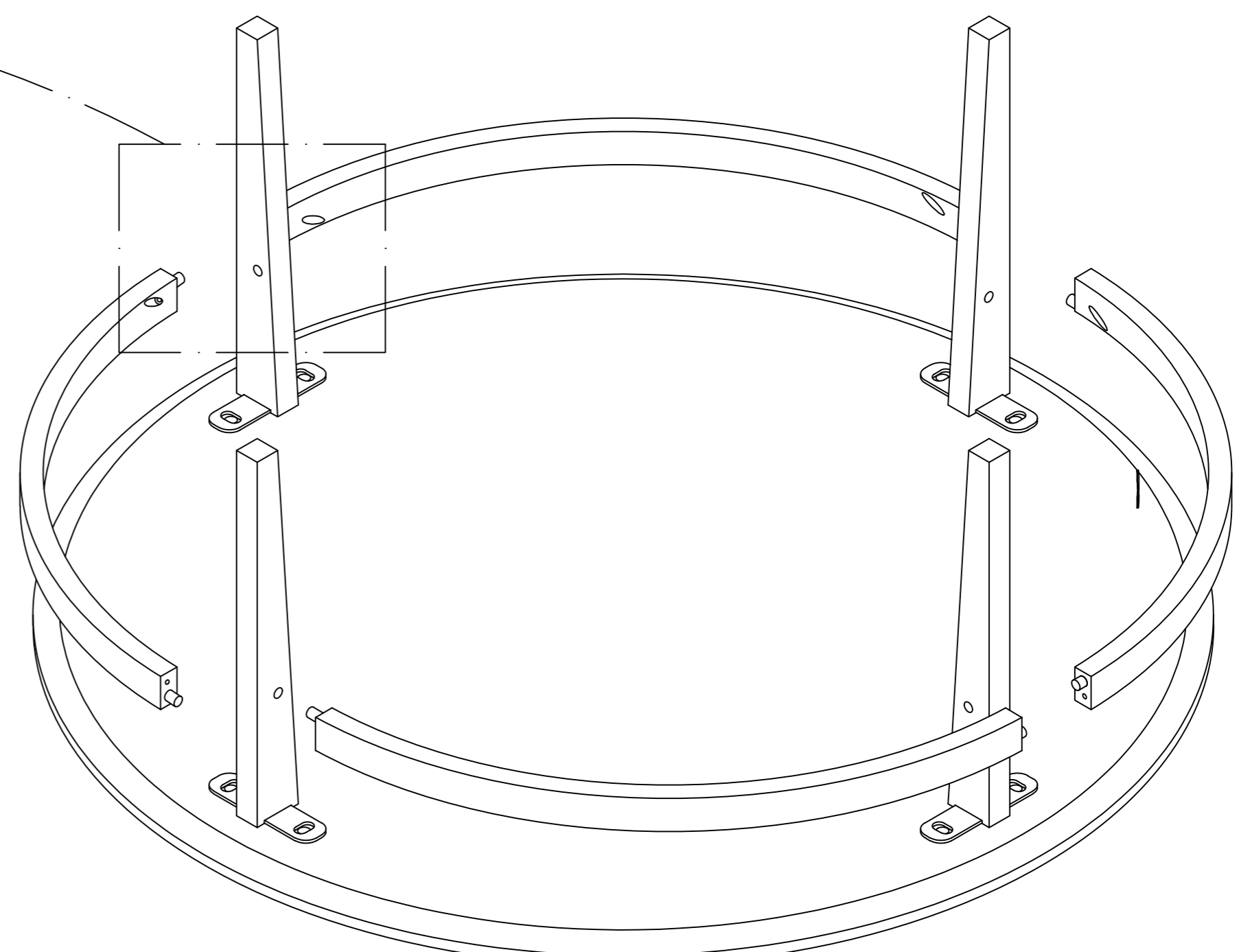
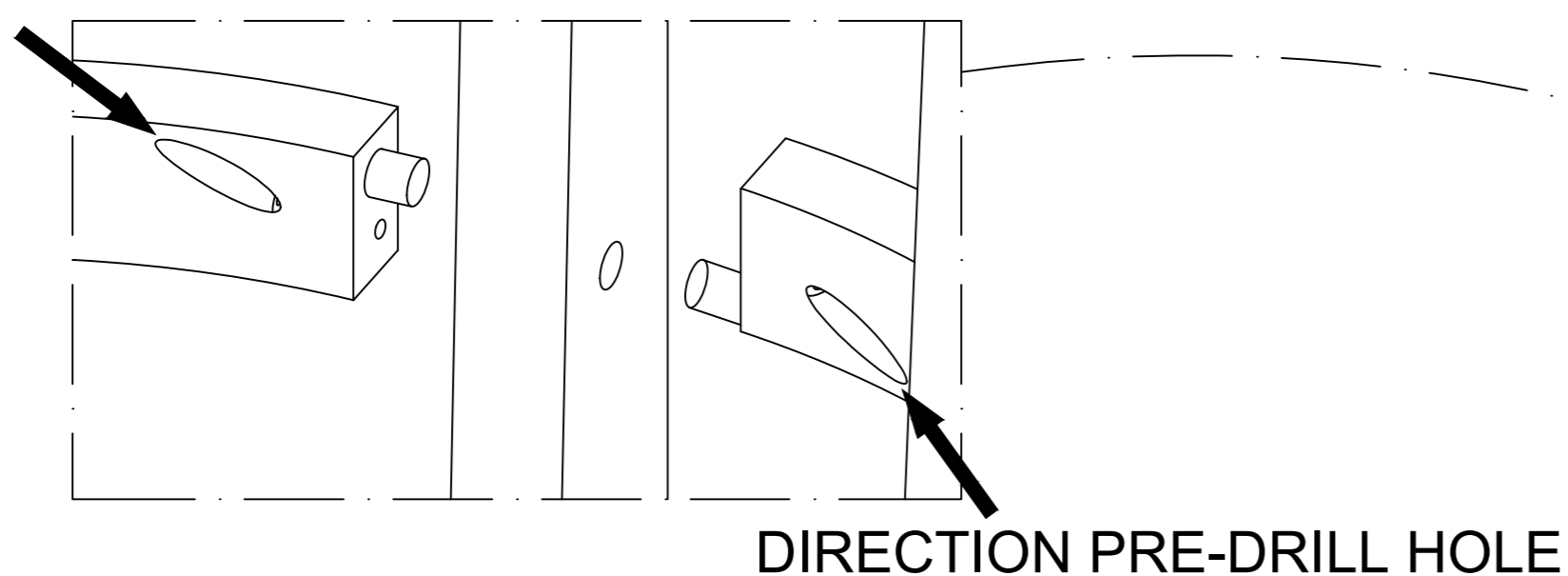
NOTE : DO NOT FULLY TIGHTEN THE BOLT AT THIS STEP, JUST KEEP THE LEG STAND ON THE TABLE TOP



Step 3: Align the Stretcher to pre-drill holes on leg .

NOTE : DIRECTION PRE-DRILL HOLE TO ATTACH SCREW ON EACH STRETCHER ARE NOT SAME DIRECTION AFTER ASSEMBLING THE LEG

DIRECTION PRE-DRILL HOLE



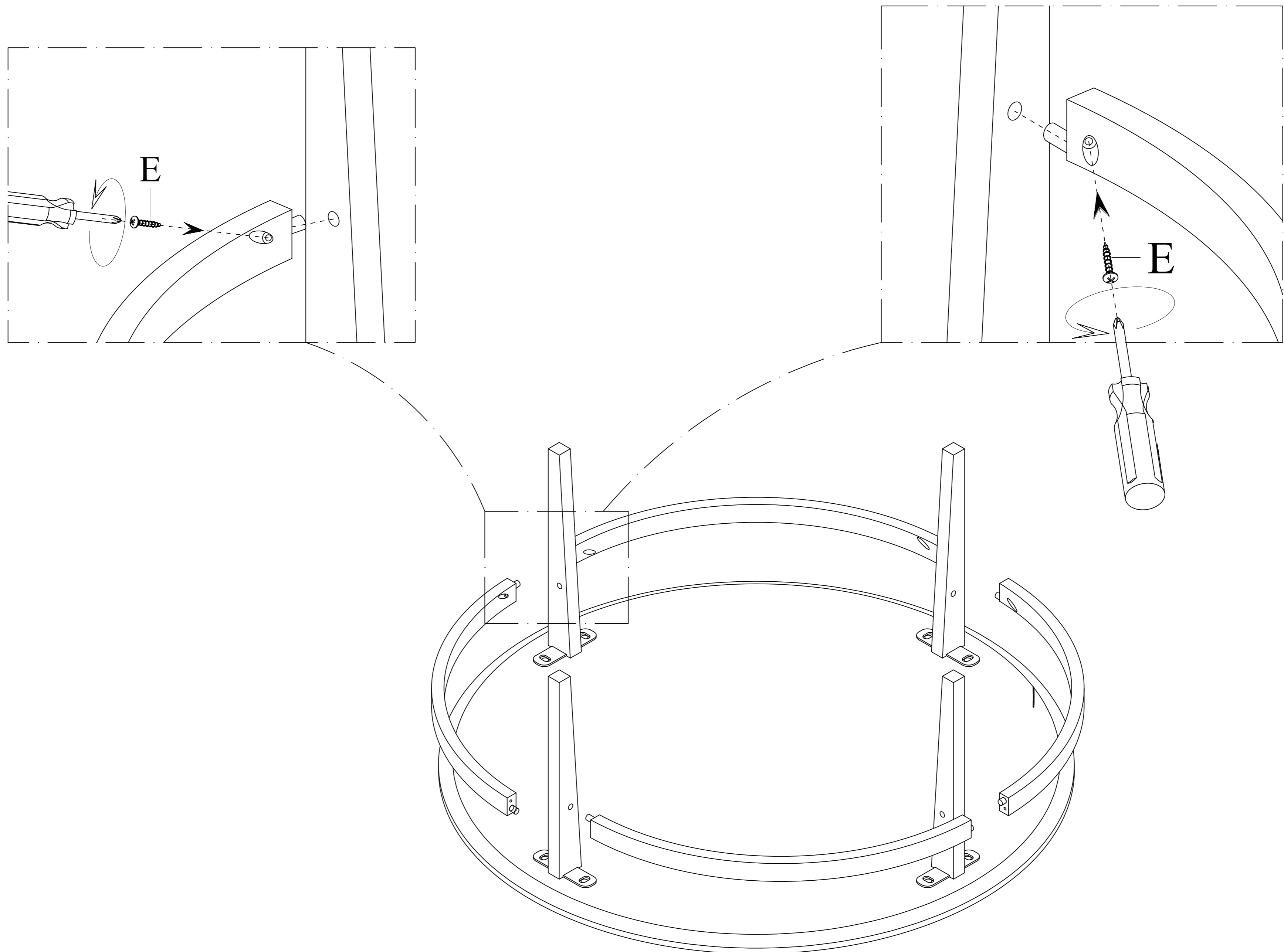
Read instructions carefully prior to assembly.

Thank you for purchasing this quality product. Check carefully for small parts which may come loose during shipment. Remove all components from pack and place top down on soft surface such as carpet or cloth to prevent scratching the finish. Identify and count all parts as specified below.

It is recommended to use two or more persons during the assembly process.

Step 4: Attach **each the Stretcher (3)** to the Leg (2) by using Screw (E) with Screw-Driver (not provide).

NOTE : FULLY TIGHTEN THE ALL BOLT AND SCREWS AT THIS STEP.



Step 5: Turn up right table. Assembly is now completed.

