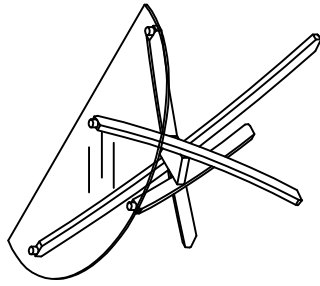




MAGNUSSEN[®]
H O M E

Beyond the expected.[®]

ASSEMBLY INSTRUCTION : MODE D'EMPLOI:INSTRUCCIONES DE ENSAMBLE
T2050-75



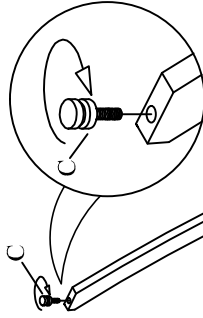
T2050-75

No.	PART	DESCRIPTION	T2050-75 MAG. CODE	QTY.
1		Glass Top	T2050-75	1
2		Metal Plate	PT2050-75P	1
3		Front Metal Leg	PT2050-75L3	2
4		Left Back Metal Leg	PT2050-75L1	1
5		Right Back Metal Leg	PT2050-75L2	1

ASSEMBLY HARDWARE

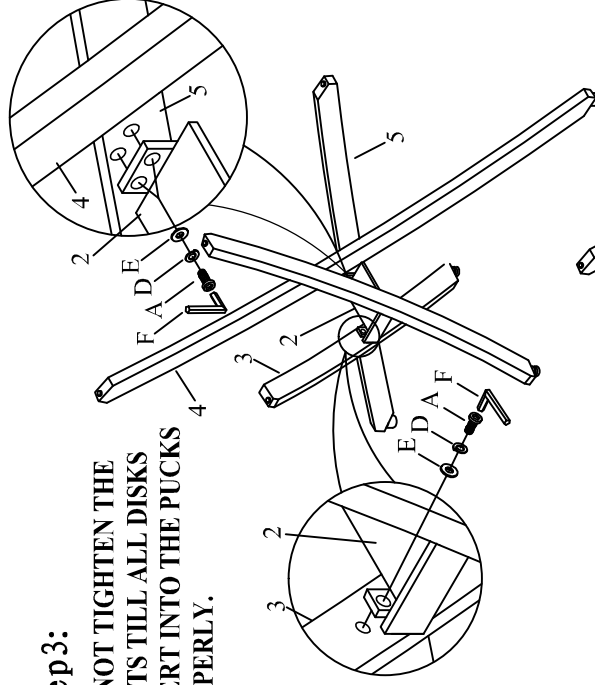
No.	PART	DESCRIPTION	QTY.
A		Bolt $\phi 1/4'' \times 5/8''$ L	6
B		Bolt $\phi 1/4'' \times 3/16''$ L	4
C		Metal Puck	4
D		Lock Washer $\phi 1/4''$	6
E		Flat Washer $\phi 1/4'' \times 13$	6
F		Allen Wrench(4mm)	1
G		Allen Wrench(3mm)	1

Step1:

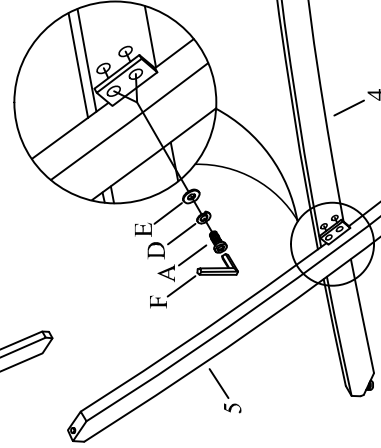


Step3:

DO NOT TIGHTEN THE BOLTS TILL ALL DISKS INSERT INTO THE PUCKS PROPERLY.

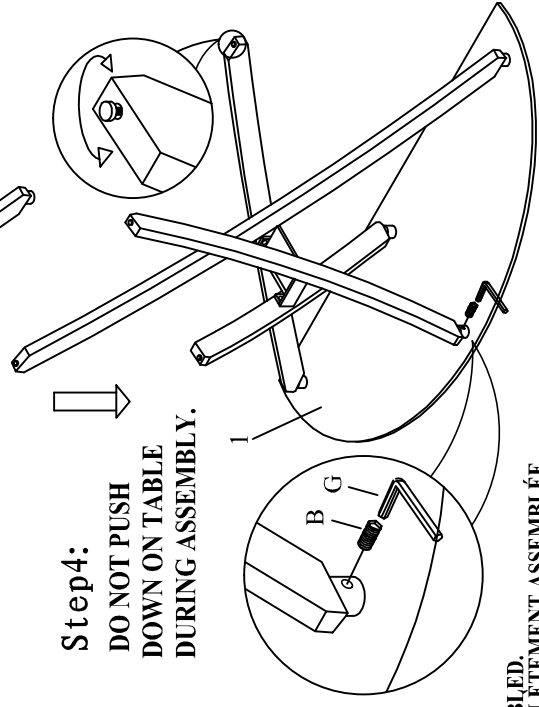


Step2:



Step4:

DO NOT PUSH DOWN ON TABLE DURING ASSEMBLY.



IT IS BEST THAT TWO PEOPLE ARE INVOLVED IN THE ASSEMBLY OF THIS TABLE.

NOTE:

ASSEMBLE UNIT ON A SOFT SURFACE.
ASSEMBLEZ L'UNITÉ SUR UNE SURFACE MOLLE.
ENSAMBLE LA UNIDAD EN UNA SUPERFICIE PLANA Y SUAVE.

DO NOT TIGHTEN BOLTS UNTIL THE UNIT IS COMPLETELY ASSEMBLED.
NE SERREZ PAS LES BOULONS JUSQU'À CE QUE L'UNITÉ SOIT COMPLÈTEMENT ASSEMBLÉE.
KD FURNITURE SHOULD BE TIGHTENED PERIODICALLY TO AVOID BREAKAGE/DAMAGE. ANOID OVER TIGHTENING.
LOS SUJETADORES DE LOS MUEBLES KD SE DEBEN APRETAR PERIÓDICAMENTE A FIN DE EVITAR FOTURAS/DANOS.
PROCURENO APRETAR EN EXCESO.