

LIVING SPACES

OWNER'S MANUAL

JAXON CAFE SIDEBOARD
LIVING SPACES SKU : 77097
VENDOR ITEM NO. : 7YC973



Scan QR code to view assembly video

ASSEMBLY PARTS LIST

SKU #	IMAGE	DESCRIPTION	QUANTITY	HARDWARE KIT PACKED IN BOX SKU : 7YZZ73HW			
				SKU #	IMAGE	DESCRIPTION	QUANTITY
77097		SIDEBOARD	1	7YZZ73HW-1		ALLEN BOLT (M6 X 50MM)	4
7YC973LG		LEG	4	7YZZ73HW-2		FLAT WASHER (M6)	4
7YC973CL		CENTER SUPPORT LEG	1	7YZZCPHLS		DOOR HANDLE	2
FULLY ASSEMBLED 				7YZZ73HW-3		DOOR HANDLE BOLT (M4X30MM)	4
				7YZZ73HW-4		ALLEN KEY	1
				RPZZCPTRDQP		TIPPING RESTRAINT	1

PRE-ASSEMBLED PARTS LIST

SKU #	IMAGE	DESCRIPTION	SKU #	IMAGE	DESCRIPTION
7YZZCPHL		DRAWER HANDLE	7YC973SH		SHELF
7YZZCPDG400		DRAWER GLIDE SET	RPZZCPSSP		SHELF SUPPORT PIN
7YZZCPFC18		FOOT CAP	7YZZ84GMG		DOOR MAGNET
7YZZCPBTS		SMALL DECORATIVE BOLT	7YZZ73HG		DOOR HINGE

LIVING SPACES

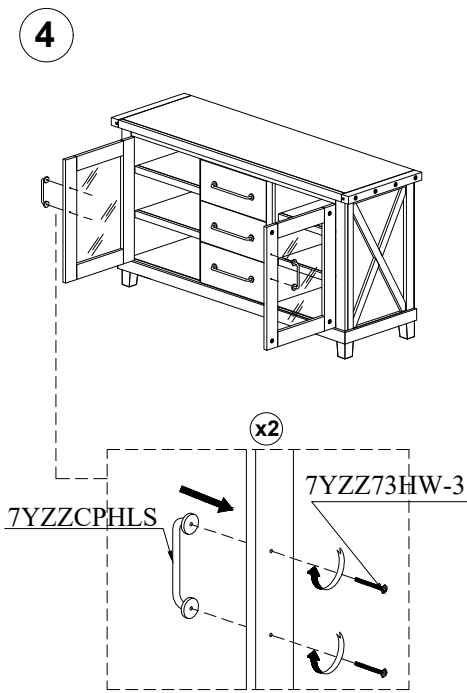
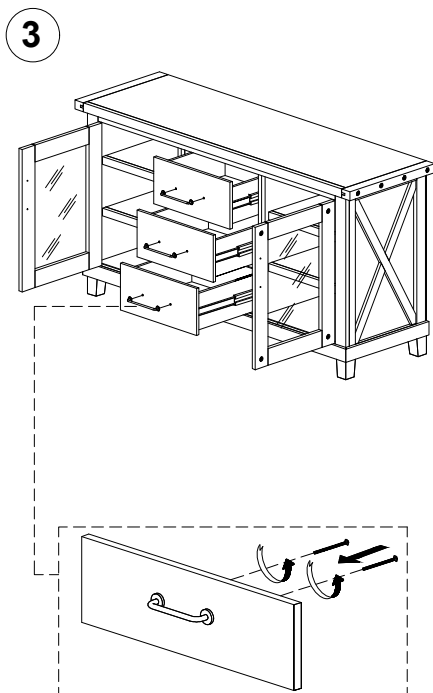
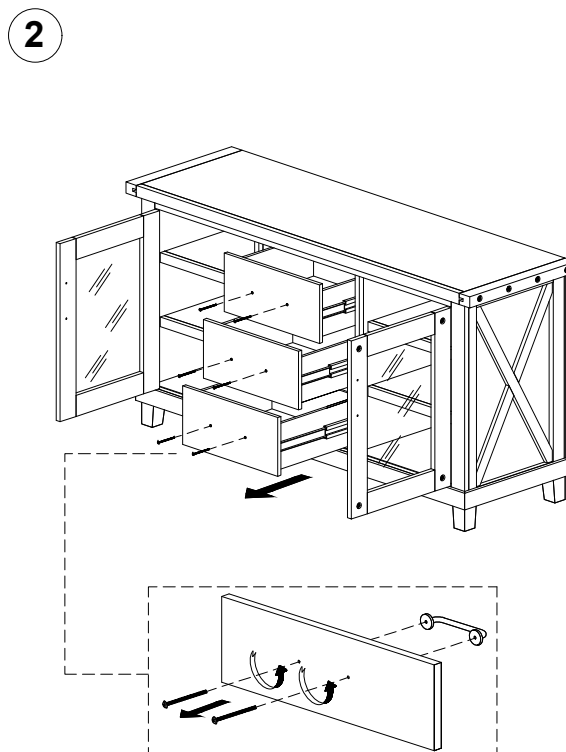
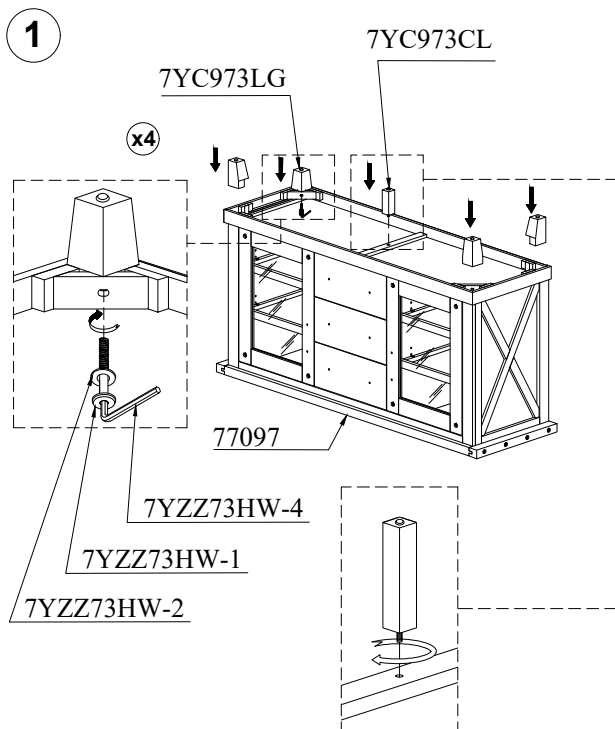
OWNER'S MANUAL

JAXON CAFE SIDEBORD
LIVING SPACES SKU : 77097
VENDOR ITEM NO. : 7YC973



Scan QR code to view assembly video

ASSEMBLY INSTRUCTIONS



ASSEMBLY COMPLETE

LIVING SPACES

OWNER'S MANUAL

JAXON CAFE SIDEBBOARD
LIVING SPACES SKU : 77097
VENDOR ITEM NO. : 7YC973



Scan QR code to view assembly video



WARNING:

- Maximum distributed load capacity: 225 lbs.
- Drawer capacity: 50 lbs. per drawer.
- Sitting, standing or jumping on this product may result in damage or injury.
- Injuries and damage can occur from furniture tip over if product is not properly anchored to the wall. Use the Furniture Tipping Restraint provided with the product. If the Furniture Tipping Restraint kit is not in the box, please contact our customer service department in order to obtain another kit before using the furniture.

ROUTINE MAINTENANCE:

Periodically check all fittings and tighten if necessary, as they can loosen over time.

CARE AND CLEANING:

SOLID WOOD FURNITURE

Congratulations on purchasing this handcrafted solid wood furniture product. Please keep in mind that wood is sensitive to changes in humidity. As the weather changes so does the relative humidity in your home and the moisture content of your solid wood furniture. We have taken every precaution to stabilize the lumber used to build this product. Still, you may observe plank movement or small cracks as the seasons change, particularly during the first 6-12 months of ownership. This is normal for solid wood furniture and will not affect the performance or longevity of this product.

Dust frequently with a clean, damp, lint-free cloth. Frequent dusting will remove abrasive build-up which can damage a finish over time. Avoid using oily polishes or waxes. Avoid exposing your furniture to strong sunlight. Prolonged exposure to direct sunlight can fade the finish of your furniture. Do not expose your furniture to any liquids. Never allow water to sit on your furniture. Do not place hot items on top of surface, always use a mat or other protector. Alcohol, nail polish and perfume are also dangerous, as they can dissolve the furniture finish on contact and may require professional repairs.

GLASS

Clean with a slightly damp cloth and dry immediately with a lint-free cloth. Use only mild detergents and cleaning solutions which are recommended for cleaning glass. Use coasters and placemats on glass table tops to prevent marking on the surface of your product.